



LIVING SILENT HUNTER III

LSH3_V5_Autoplot-KWK_EN

for LSH3 V5

Foreword

Due to some difficulties reported by some players, using the "Autoplot-Function" for the Kaiser-Wilhelm-Kanal, we have decided to give you this guidance.

In case of attentive survey of this guidance, there should be no more problems.

If there are still any problems, contact us at the well known forums.

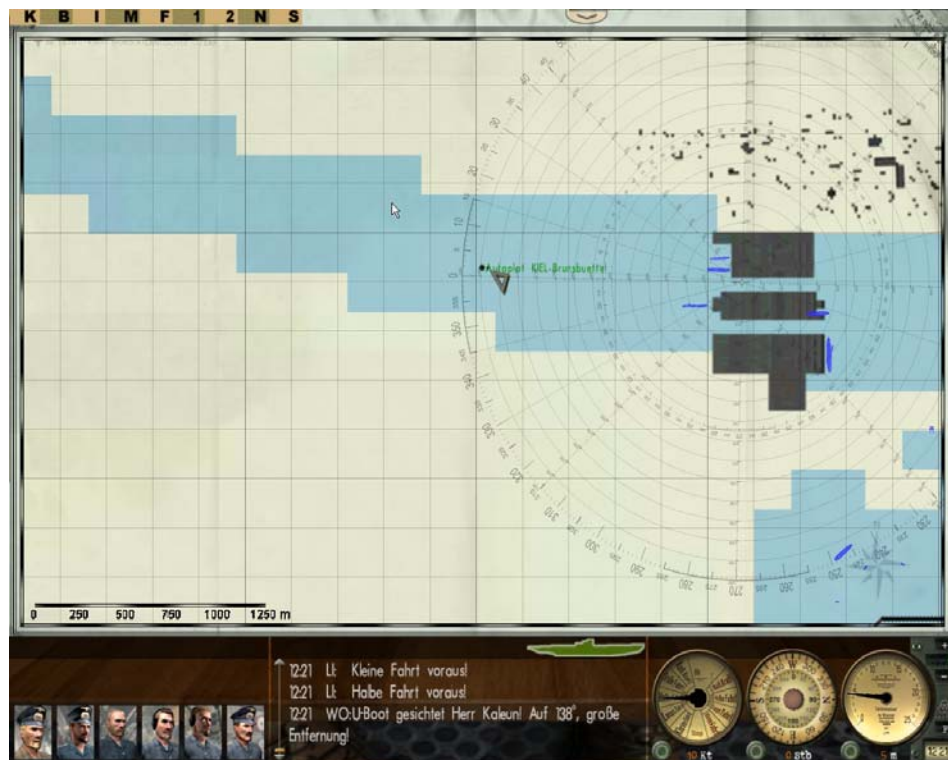
For the "lock-newbie" we advise to cruise the locks manually, because if you change the direction of motion with a plotted course the U-boat will turn within the lock-basin.

Leaving Kiel (from Kiel to Brunsbüttel)

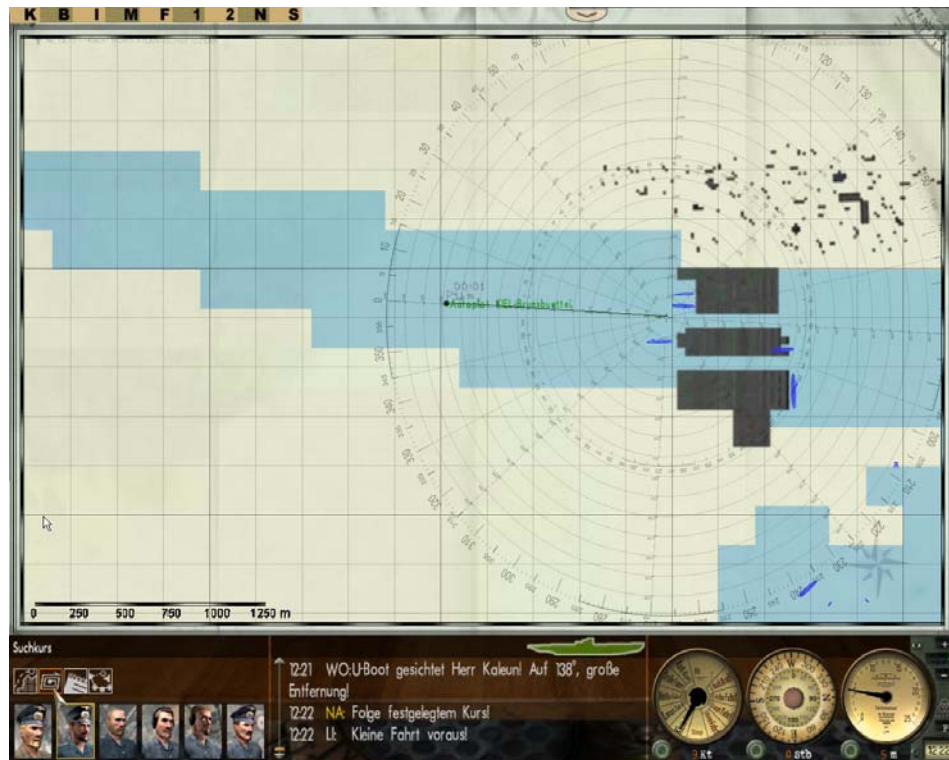
Regardless from which point you start (Bunkerstart or pier), you set course to the first gates of the lock Holtenau. Be aware to set the last waypoint far enough from the gate, because your U-boat will not stop immediately.



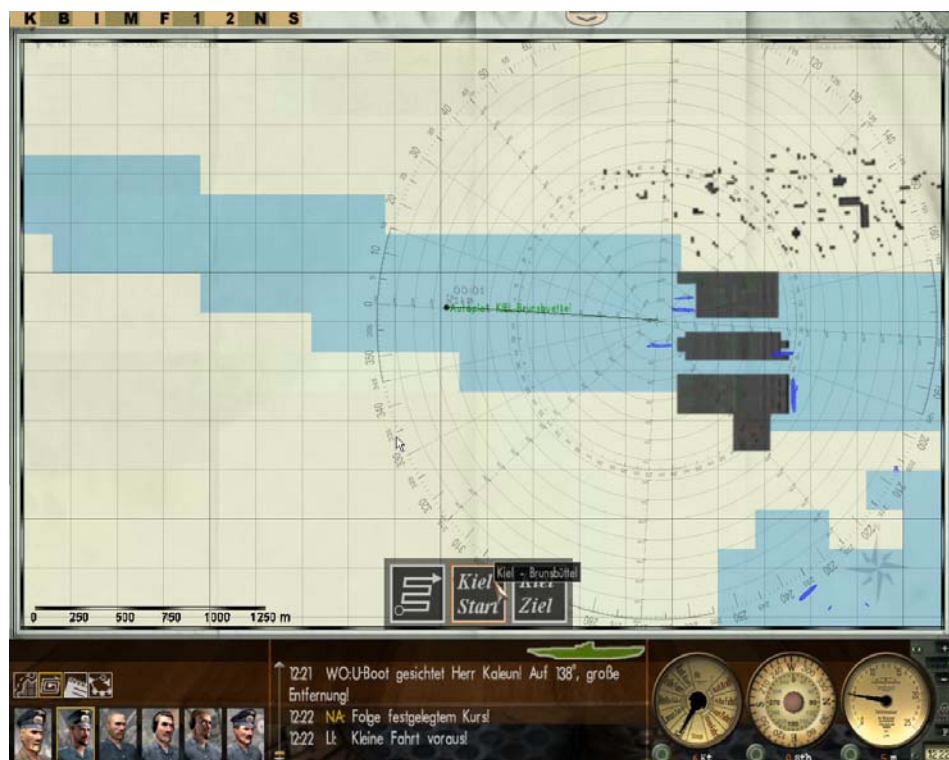
When you have passed the second gate, change to the navigation map (F5) and zoom in to the highest resolution (scale 250 meters). Now set a course to the green spot named "Autoplot Kiel – Brunsbüttel".



Now select the navigation officer and click at "search pattern".



The search patterns appear. Select "Kiel Start" to get the course to Brunsbüttel plotted into the map.



The auto plot-course to Brunsbüttel is plotted into the map.



It is advisable, to use not more than the second travelling range and a time compression level of max 64-fold to travel through the KWK.

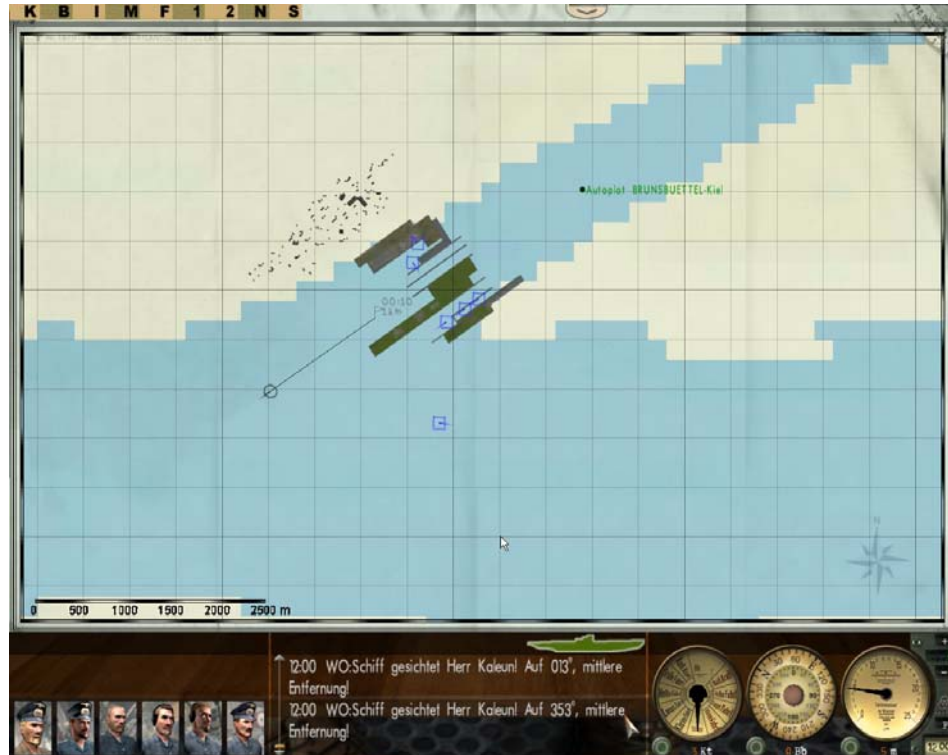
At the end of the canal you reach the locks of Brunsbüttel. It is advised to pass the lock gates manually. The last waypoint is leading you to the middle of the first gate.



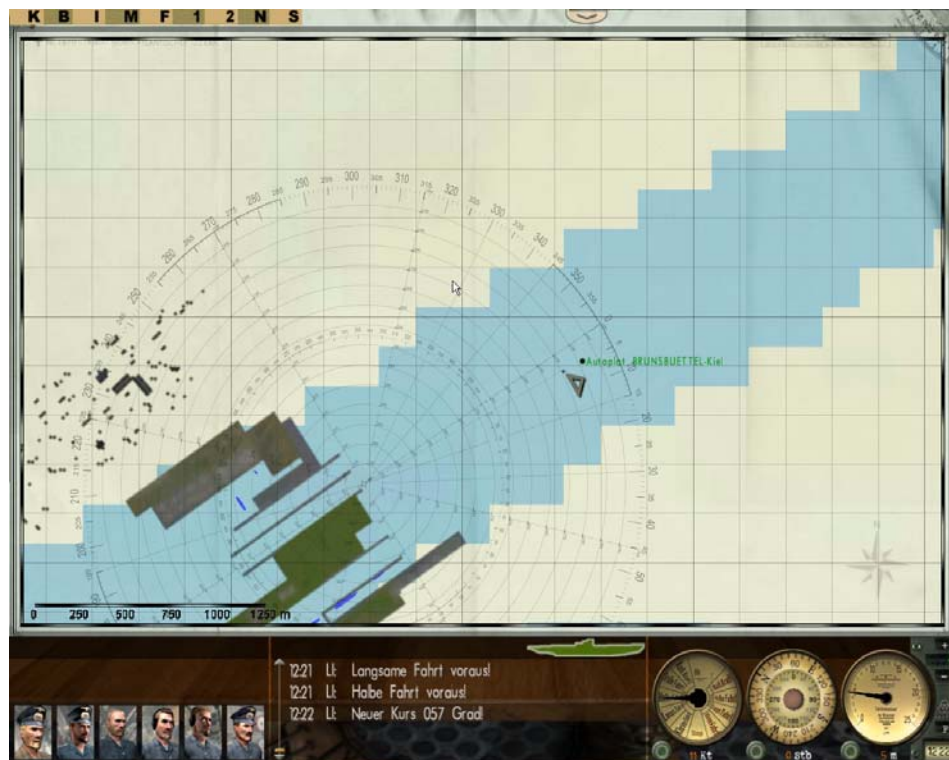
After passing the lock you may plot your new course to your target area.

Enter port of Kiel (from Brunsbüttel to Kiel)

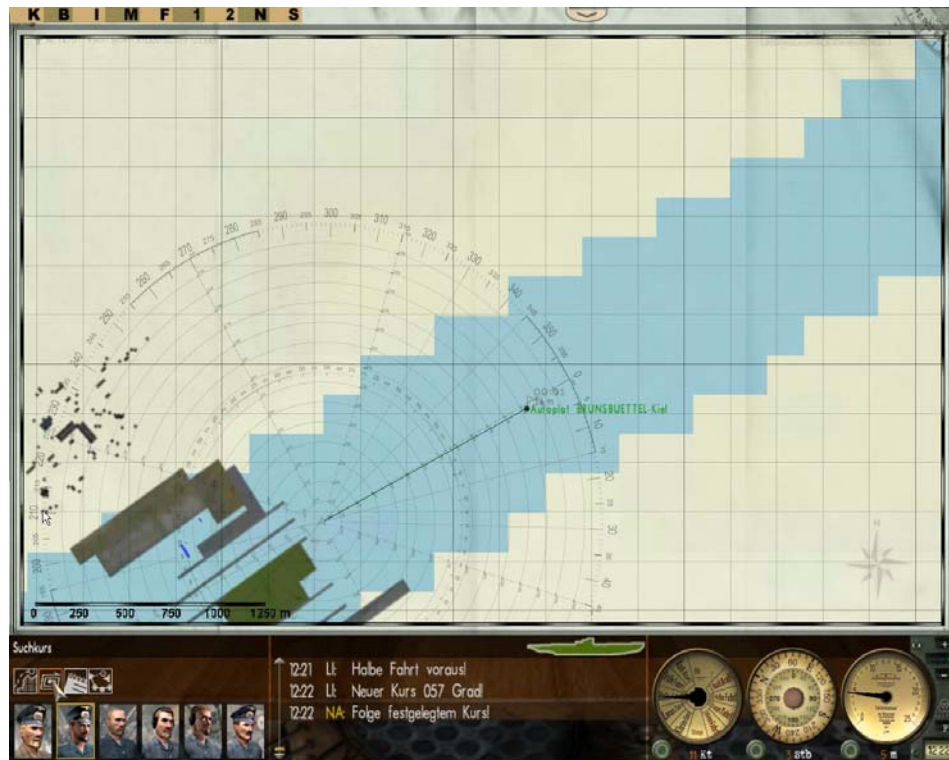
On returning to the base of Kiel you reach the locks of Brunsbüttel. Plot your last waypoint in front of the first gate (mind your speed). The two gates should be passed manually.



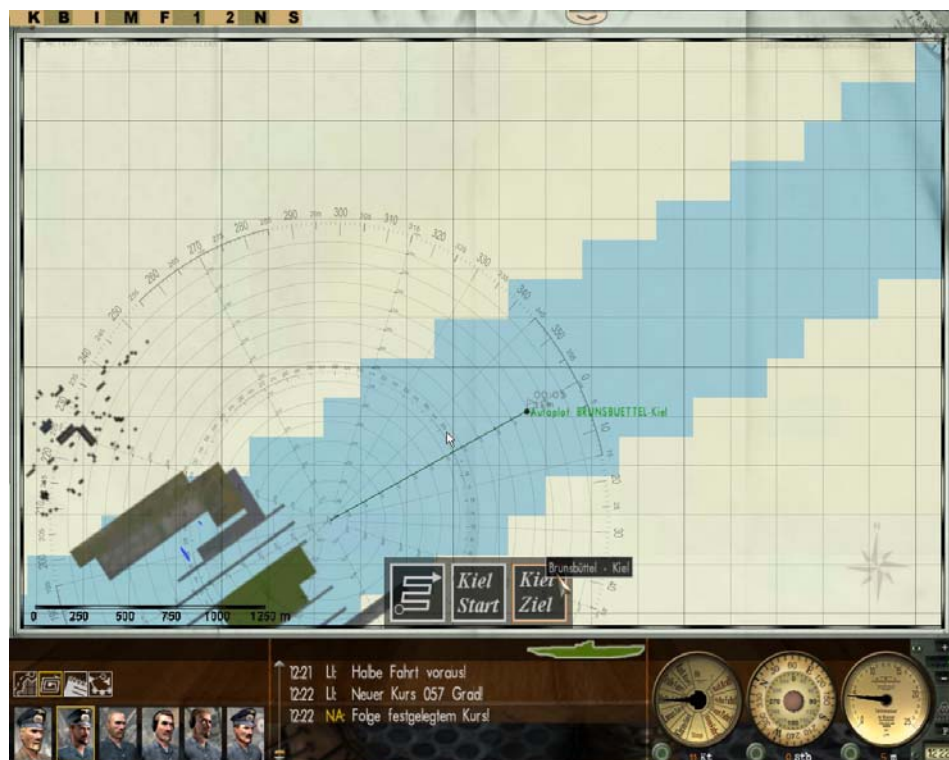
When you have passed the last gate change to the navigation map (F5) and zoom in to the highest resolution (scale 250 meters). Now set a course to the green spot named "Autoplot Brunsbüttel – Kiel".



Now select the navigation officer and click at "search pattern".



The search patterns appear. Select "Kiel Ziel" to get the course to Kiel plotted into the map.



The auto plot-course to Brunsbüttel is plotted into the map.



It is advisable, to use not more than the second travelling range and a time compression level of max 64-fold to travel through the KWK.

At the end of the canal you reach the locks of Holtenau near Kiel. It is advised to pass the lock gates manually. The last waypoint is leading you to the middle of the first gate.

After passing the lock you may plot your course to the harbour of Kiel.

The search pattern 1 can be used furthermore to search your grid squares and has no influence on the auto plot.

With kind regards
KretschmerU99, Blueduck
01-15-2010