



# LIVING SILENT HUNTER III

## Edition 2015

10th year anniversary of supermodding



2005-2015 by LSH3.com

## Supermod Living Silent Hunter III Edition 2015 (V15)

# Installation under Windows Vista/7/8/8.1/10

The supermod **Living Silent Hunter III Edition 2015 (V15)** has been developed during the past five years and contains a well matched collection of free mods, tools and patches for the Ubisoft® game **Silent Hunter III®**.

This supermod is an add-on to the SH3 original game. A new installation of Silent Hunter III® therefore is necessary to play the supermod!

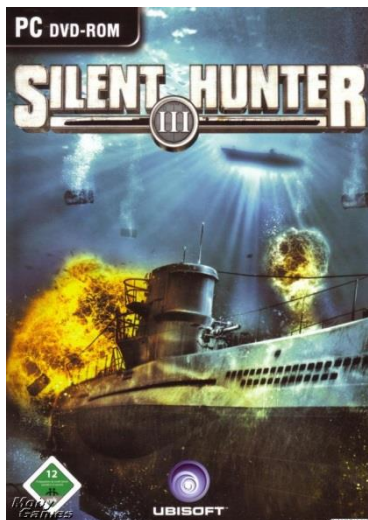
(A guide on how to install the original game Silent Hunter III® can be found page 11 onwards.)

Installation of this supermod LSH3 Edition 2015 can be done with few steps.  
The following pages explain step by step what needs to be done.



**Content:**

 4GB Patch by NTCore	 HSIE Patch Options Selector	 JSGME by JoneSoft	 COMMANDER by JoneSoft	 MissionEditor X2 + WS	LSH3 V15 Quick start guide	Page 2
					LSH3 V15 System requirements	Page 2
					Antivirus protection programs	Page 3
					LSH3 V15 Downloading the supermod	Page 3
					LSH3 V15 Installation and mod activation	Page 4 and 5
					SH3 Troubleshooting / FAQ	Page 6 to 10
					SH3 The golden rules	Page 9
					SH3 Installation of the original game	Page 11 to 15
					SH3 Patchversion and StarForce	Page 12 and 13
					SH3 supermods 2005 til 2015	Page 16



Original SH3 DVD cover 2005



LSH3 Edition 2015  
installation program STARTER

## Quick Start Guide – Download, Installation, Activation

- |   |  |
|---|--|
| <ol style="list-style-type: none"> <li>1. <b>Restart the computer</b></li> <li>2. <b>Download Edition 2015 supermod file(s) from <a href="http://www.lsh3.com">www.lsh3.com</a></b></li> <li>3. <b>After downloading start the STARTER installation file</b></li> <li>4. <b>Follow the installation</b></li> <li>5. <b>Activate the supermod within JSGME</b></li> <li>6. <b>Start the game using the new desktop link</b></li> </ol> | <ul style="list-style-type: none"> <li>- Note: Close all your running programs and downloads</li> <li>- Note the two different download options, choose the one <b>suitable for your internet connection speed</b></li> <li>- Downloaded file: <b>LSH3-EDITION-2015-STARTER-FULL.EXE</b> or <b>LSH3-EDITION-2015-STARTER-SPLIT.EXE</b></li> <li>- Note: <b>Carefully read and follow the information for each step during the installation!</b></li> <li>- Note: After Installation JSGME is started automatically. <b>For the time being only activate the supermod!</b></li> <li>- Tip: To test your installation start the <b>Naval Academy</b> and close the game afterwards.</li> </ul> |
|---|--|

## System requirements

To be able to play LSH3 Edition 2015 **crash-free in any game situation with all additional mods enabled**, the following system specifications are needed:

Operating system	Windows Vista/7/ 8/ 8.1/10; <b>64 bit</b>
CPU	at least 4 cores
RAM	at least <b>8 GB of RAM</b>
GPU	dedicated GPU with at least <b>2 GB of VRAM</b>
Disk space	20 GB free for download, installation and playing
During installation	administrator privileges

### Technical notes:

**Operating system:** Due to the performance needed LSH3 Edition 2015 does not work on Windows XP and mobile Windows ME devices. It does not work on Apple operating systems. Using wine SH3 with Edition 2015 can be played on wine in principle, but hasn't been tested by us in-depth. Steam versions of SH3 are not supported by us.

**Loading time:** The loading time mainly depends on the CPU power. On recent systems with 4, 6 or 8-cores and high clock rates it takes about 1 to 3 minutes in average. Older 2 core processors easily can take up to 10 minutes or longer until you are in your submarine and ready to play (when starting the career in 1939). For the best loading performance possible we recommend to install everything (game, supermod, save games) on a SSD drive. Activating mods in JSGME, game start and gameplay works a lot faster then.

**Graphics card:** The power of the graphics card (GPU and VRAM) becomes relevant only on patrol and in the 3D view. Starting with 1 GB of VRAM the game may be playable in big ports with frame rates of about 5 to 15 FPS. With only 1 GB of VRAM (or lower) the game will crash (CDT) later in the game (e. g. on sinkings, ship explosions or while saving)! For a crash-free gaming experience (under any circumstances and all additional mods activated) 2 GB of VRAM are strongly recommended.

**Laptop players:** Older or recent budget laptops with integrated / on-board GPU are not suited for LSH3 Edition 2015. Good enough gaming laptops currently are available starting from about 1800 Euros.

## Deactivating the anti-virus protection

We recommend to completely **deactivate** any anti-virus protection just **before** starting **download** or **installation**! Why?

The supermod Living Silent Hunter III Edition 2015 has been tested for viruses, trojans and other malware intensively. Over fifty current anti-virus protection programs have rated the download files as **clean**.

If the anti-virus protection is kept on, all files get scanned individually even multiple times during download and installation. This scan is not necessary and massively can delays download and installation.

So turn off your anti-virus protection while downloading and installing. **Of course you should not surf the internet during this time!**

**Note:** Some anti-virus tools (such as BitDefender) show warning messages. **All of those are false alarm!** Deactivate any anti-virus protection during download or installation to prevent unnecessary loss of data. **If this happens repeatedly you have to exclude the SH3 installation folder from future scans.** Eremit and Urmel guarantee **100% virus-free files.**

## Downloading Edition 2015

**Note:** The supermod Living Silent Hunter III Edition 2015 should only be downloaded from its **original source**, the LSH3 website at [www.lsh3.com](http://www.lsh3.com).

**Important:** Each file must be loaded **individually, without interruption** and **within an hour!** You should restart your computer just before the download. Stop any background services and tasks like downloads or updates.

For different internet connection speeds two different download options are provided:

Supermod split into **nine** files

- LSH3-EDITION-2015-STARTER-SPLIT.EXE (starter file for the installation)
- LSH3-EDITION-2015-SPLIT.EXE.1
- LSH3-EDITION-2015-SPLIT.EXE.2
- LSH3-EDITION-2015-SPLIT.EXE.3
- LSH3-EDITION-2015-SPLIT.EXE.4
- LSH3-EDITION-2015-SPLIT.EXE.5
- LSH3-EDITION-2015-SPLIT.EXE.6
- LSH3-EDITION-2015-SPLIT.EXE.7
- LSH3-EDITION-2015-SPLIT.EXE.8

**Recommended** for **normal/average** internet connection speeds.

**Strongly recommended** for **wireless** internet connections like **Wi-Fi/WLAN** (unstable) or **LTE** and **UMTS** (very unstable).

**Note:** For unstable internet connections we recommend to install the free tool “**Free Download Manager**”.

It can hold the download connection for hours/days and makes sure all files are downloaded completely and error-less.

Download link: <http://www.freedownloadmanager.org/download.htm>.

After installing the Free Download Manager restart your computer.

**Important:** For the installation **all nine files have to be in the same folder.**

**Tip:** After downloading and before starting the installation of Living Silent Hunter III Edition 2015 restart your computer.

Supermod in **one big** file

- LSH3-EDITION-2015-STARTER-FULL.EXE (installation file)

**Recommended** for **fast and stable** high-speed internet connections on devices with **wired** connection.

**Note:** Some internet providers interrupt the internet connection automatically on a regular basis.

In this case the “**Free Download Manager**” is useful, too.

**Tip:** After downloading and before starting the installation of Living Silent Hunter III Edition 2015 restart your computer.

# Installation of Edition 2015

Note: Before installation the computer should be restarted! Stop any background services or tasks (like downloads or updates). Deactivate any anti-virus protection (for further information see above).  
**If you are using the 9-parts download file, please check that all files are in the same folder.** Now start the installation of LSH3 Edition 2015:

Installation... using **nine** download files:

» Execute the file: **LSH3-EDITION-2015-STARTER-SPLIT.EXE**

Installation... using the **single** big download file:

» Execute the file: **LSH3-EDITION-2015-STARTER-FULL.EXE**



Important:

**Windows 7 and 8.1** show **different** “protection messages” after starting the installer. Those **have to be confirmed properly** to continue the installation:

Windows 8.1: In the **blue SmartScreen** message click on “**more info**”  
 Click the button “**Run anyway!**”

Then confirm the **yellow UAC** question with **YES**

Windows 7: Confirm the **yellow UAC** question with **YES**

## Windows 8.1



## Windows 7 & 8.1



Different “protection messages” for Windows 8.1 and Windows 7 after starting the installer

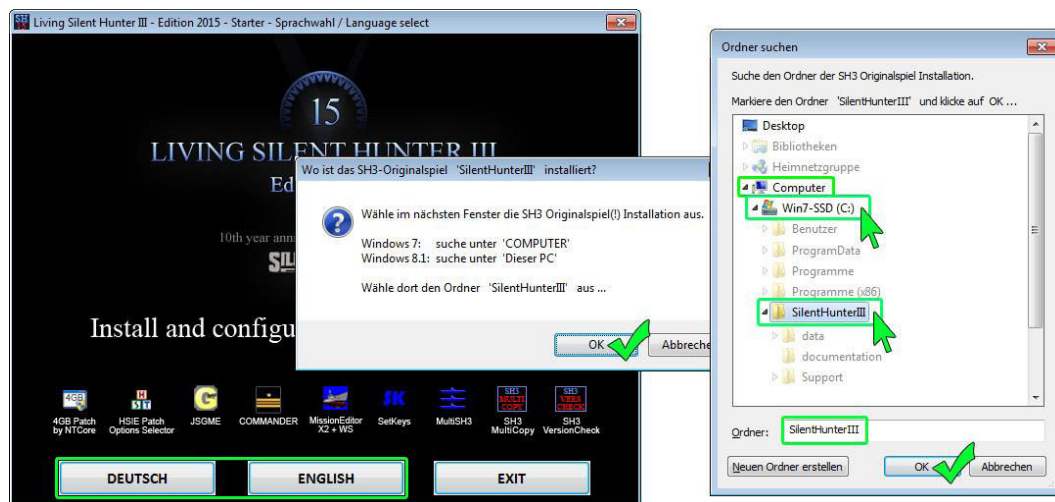
LSH3-EDITION-2015-STARTER installation dialog:

- Choose a language and follow the instruction
- Choose the **installation folder** of the **original SH3 installation**
- Wait while the files are being unpacked
- The rest of the installation works automatically

This process can take up to 20 minutes.

Please read the final instructions carefully.

Afterwards the STARTER windows closes itself and JSME opens up for mod activation (see next page) ...



LSH3-EDITION-2015-STARTER window, query and selection of the original SH3 installation folder

## Supermod activation in JSGME

**Important: First just activate the main mod (topmost entry) and then test your installation!**

In JSGME choose the main mod (LSH3-2015\_FULLVERSION) only

and activate it with the arrow button in the middle >

### Note:

Please ignore the note "(no response)" and wait, until the main mod is activated.

The activation of the main mod can take up to **10 minutes!**

We recommend not to do any work on the computer during activation!

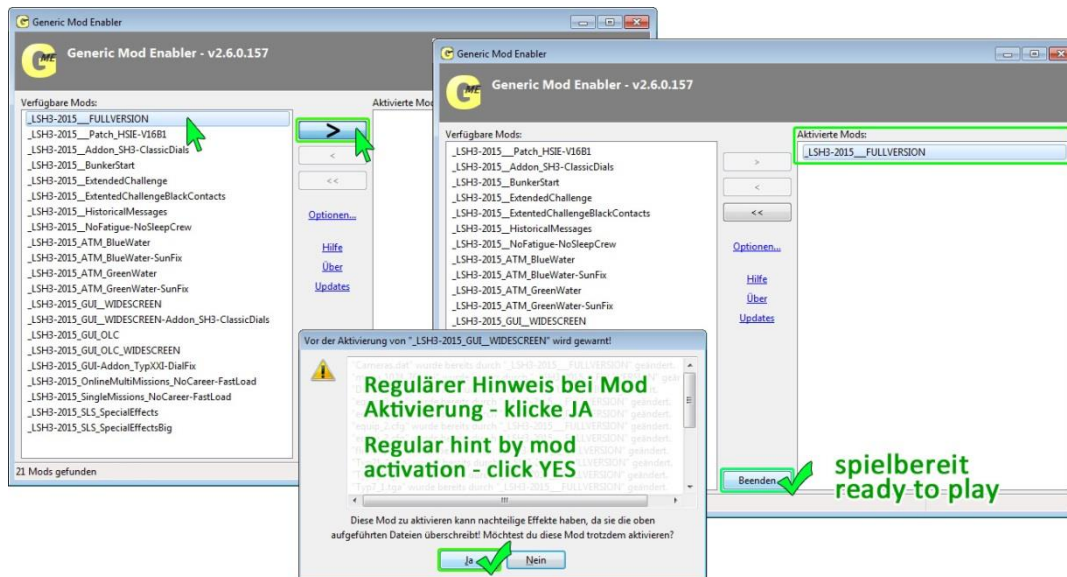
Wait until **LSH3-2015\_FULLVERSION** shows up in the right column of the window.

For players with a modern widescreen display (aspect ratio 16:9 or 16:10) we recommend to activate the widescreen mod LSH3-2015\_GUI\_WIDESCREEN additionally.

### Wichtig:

On each additional mod activation a small information window shows a list of files that are to be overwritten. To activate the mod you have to click on **YES**.

After the activation JSGME can be closed by clicking on **CLOSE**.



JSGME window for mod activation

## Installation and activation finished – now what?

The following (L)SH3 game items are now ready for playing:

- » The supermod Living Silent Hunter III Edition 2015 has been activated with JSGME and is ready to play
- » The SH3 patch “4GB” is active. The SH3 patch “HSIE - Options Selector” is active with optimised base settings
- » The additional program “LSH3-COMMANDER Version” (with JSGME for COMMANDER) is preinstalled. The COMMANDER can be used right away (and without additional tools)
- » The SH3 helper tools “MissionEditorX2”, “SetKeys”, “MultiSH3” and “SH3-MultiCopy” are preconfigured and available if needed
- » Twenty-five SH3 and LSH3 information manuals are available(PDFs both in German and English)

**The game, all additional tools and manuals can be started with the new desktop link “LSH3 2015 START”!**

**And now; Gute Jagt, ihr Himmelhunde! 😊**

Note: If you have problems at start or while playing, do not give up. Various problems are known since ages and can be solved with few clicks. See the FAQ on the next pages...

## Help for known SH3 problems and troubleshooting (FAQ)

Silent Hunter III has been developed for Windows XP and already in the year of release 2005 some problems regarding memory and graphics management and a high susceptibility to game crashes (CTD) were revealed. In combination with the latest hardware, current versions of Windows and SH3 supermods and tools these problems become even bigger. For a flawless SH3 gameplay a correct installation of SH3 Installation (for instructions see the SH3 INSTALLATION 2015 manual on page 11 onwards) and correct handling of SH3 supermods, individual mods and tools is necessary (see the **golden SH3 rules** starting on page 9).

**The most common “errors” are caused by outdated or incorrectly configured graphic drivers and therefore easy to solve.**

Manufactures and resellers of branded PCs/Laptops (like Dell, HP, Toshiba, Medion, Asus) usually install standard video card drivers. These often have problems with SH3 and lead to such “errors” like the ones below.

**Tip:** If you have these “errors”, you should first check which graphics driver is installed and – if necessary – replace and update it to the latest version.

**Always download and install the drivers directly provided by the graphics card / chip manufactures themselves – either NVIDIA (GeForce) or AMD (Radeon).**

This makes sure all settings necessary for SH3 are available.

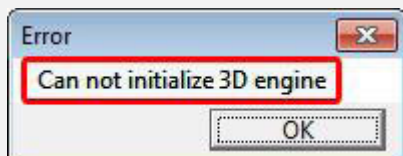
» Download **Original NVIDIA** (GeForce) graphics card drivers here: <http://www.nvidia.com/Download/index.aspx?lang=en-us>

» Download **Original AMD** (Radeon) graphics card drivers here: <http://support.amd.com/en-us/download>

The three most common “errors / problems” - having the same cause: **Incorrect graphics driver settings!**

### Problem “3D engine Error”:

The game **does not start!**



“Error” message box immediately after starting the game.

### Problem “oval” view:

Everything is **oval** in **height** or **width!**



Example showing a horizontally distorted view in game.

### Problem “black bars”:

There are **black bars** at the **top / bottom** or **left / right!**



Picture 1: Proportionally correct image on a widescreen monitor **without** WIDESCREEN mod - **with** black bars.

Picture 2: Proportionally correct image on a widescreen monitor **with** WIDESCREEN mod - **without** black bars.

**The solution:** **Adjust the driver settings!** (see next page)

**Important:** For all current widescreen formats (aspect ratio 16:9, 16:10) and for all older display formats (aspect ratio 4:3, 5:4) the following graphics driver settings **are necessary in any case!**

### Driver settings for NVIDIA (GeForce) – in the NVIDIA Control Panel:

1. With the right mouse button click on the desktop and choose **NVIDIA Control Panel**
2. On the left side under **Display** choose the entry **Adjust desktop size and position**
3. Change the following settings (see the screenshot on the left):

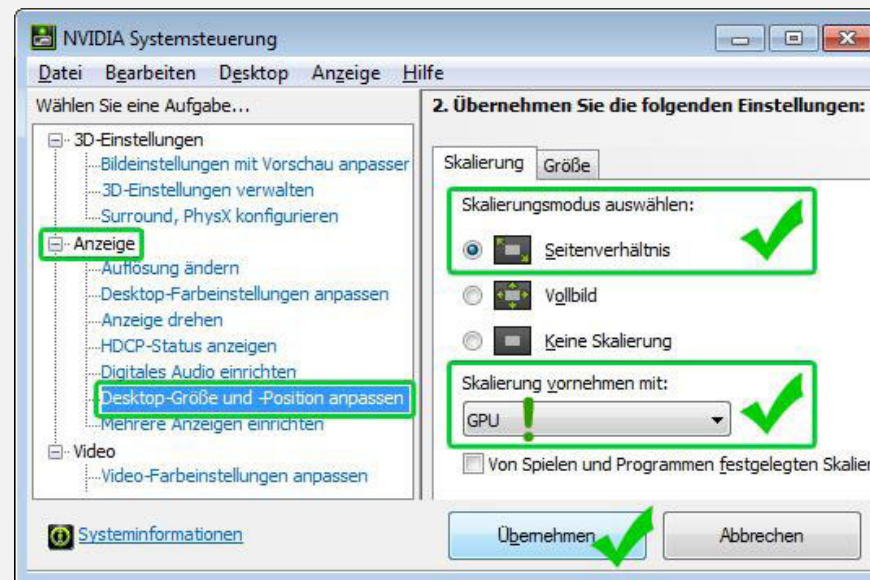
- **Select a scaling mode:** select **Aspect ratio**
- **Perform scaling on:** select **GPU**

Now click on the button **APPLY** to activate the new settings.

**Confirm any questions** and close the NVIDIA Control Panel.

**Now restart your computer.**

**Hint:** These settings have no effect on your daily use of Windows, Office etc..



Correct driver settings on current NVIDIA driver software (2015)

### Driver settings for AMD (Radeon) – in the AMD Catalyst Control Center:

1. With the right mouse button click on the desktop and choose **AMD Catalyst Control Center**
- Hint:** The following driver settings usually are only visible in **Advanced View/Settings/Options**.
2. On the left side under **My Digital Flat-Panels** choose the entry **Properties...**
3. Change the following settings (see the screenshot on the left):

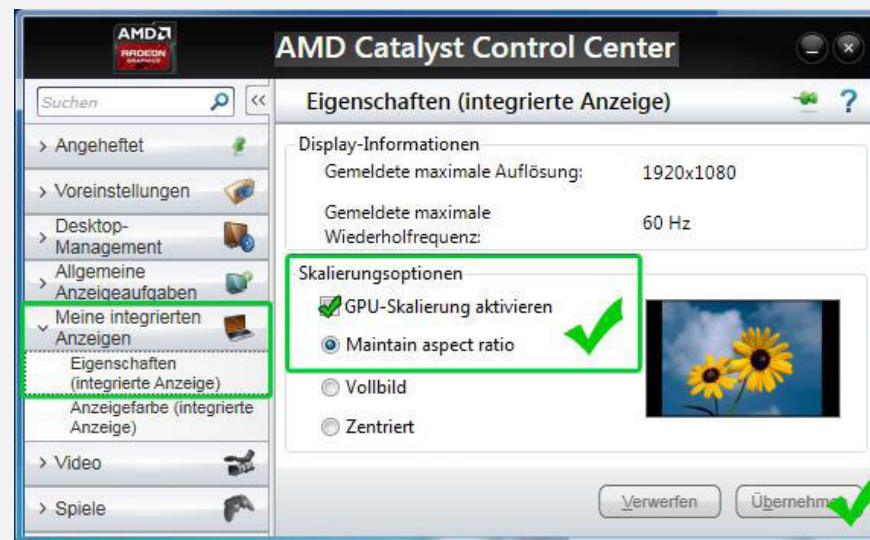
- **Image scaling:** Check **Enable GPU scaling** (if existent)
- choose **Maintain aspect ratio** (if existent) or **Scale image to full panel size**

Now click on the button **APPLY** to activate the new settings.

**Confirm any questions** and close the AMD Catalyst Control.

**Now restart your computer.**

**Hint:** These settings have no effect on your daily use of Windows, Office etc..



Correct driver settings on the current AMD Catalyst Control Center (2015)

**Problem “Loading bar” stands still:**

The game **does not finish loading**, the progress bar suddenly stops!



Progress bar only *seemingly* stops at 99%, however the game is still loading!  
Depending on the CPU power the remaining 1% can take quite some time.

**Solution:**

The game still is loading – wait until it has finished (100%)!

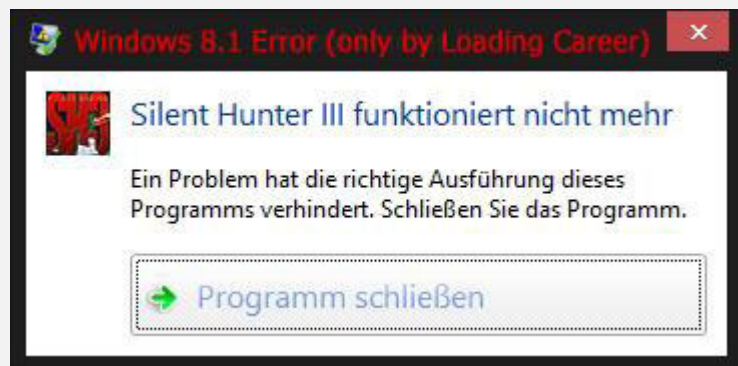
**Tip:** Note the flashing LED indicator light on the computer (hard disk activity).

Loading times for average PCs/Laptops (2010-2015):

Loading time SH3 main menu: 15 seconds to 1 minute  
Loading time Naval academy: 30 seconds to 2 minutes  
Loading time career (1939): 3 to 6 minutes  
Loading time museum: up to 20 minutes!

**Only on Windows 8.1/10! Problem “Crash on loading the career”:**

The game crashes **while loading a career only** (CTD)!



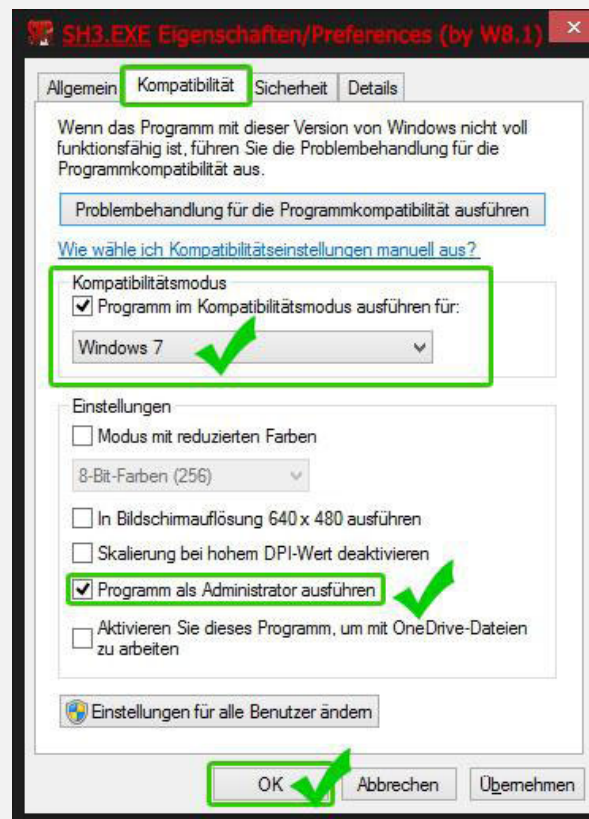
**Hint:** This message can be canceled immediately as Windows won't find a solution.

If this problem only happens when loading a career (but not when loading the naval academy), you have to enable **Windows 7** compatibility mode for **SH3.EXE**.

In the SH3 installation directory find and select the file **SH3.EXE**, right-click it and choose **PROPERTIES** from the context menu. Now select the **Compatibility** tab, change the setting **Compatibility mode** to **WINDOWS 7** and check the option **Run this program as an administrator**. Save the changes by clicking **OK** and restart your computer.

**Solution:**

Enable **Windows 7** compatibility mode for **SH3.EXE**!



Adjustments to the file properties of “SH3.EXE”, only necessary for Windows 8.1/10



## Golden rules for SH3 and its SuperMods

- a) **Original SH3 installation:** The SH3 installation has to be done **exactly as described** (see page 11 onwards), otherwise SH3 might not run flawlessly.
- b) **SH3 installation for career:** If you only want to play in **career** mode with a fixed set of enabled mods, you only need a single SH3 installation. If you want to play careers while trying different sets of mods, you should use a separate SH3 installation to do so. Otherwise you might lose your main **career**!
- c) **Multiple SH3 installations:** If you want to play **single missions** or in **online multiplayer mode** in addition to a **career**, you should use a separate SH3 installation for each mode. During installation of LSH3 Edition 2015 you have the option to create an additional second installation. Further copies can be created with SH3-MULTICOPY at any time.
- d) **JSGME mod (de)activation:** Do not (de)activate mods while the game is running. Activate mods **one by one** and wait for the mod to show up in the list on the right side. Also deactivate mods only **one by one** and **from bottom to top**!
- e) **JSGME mods:** Only activate mods if you have docked in a port, **never while being on patrol**. If you want to try out mods, use separate installations, **do not** use installations with a **career**.
- f) **JSGME external mods:** **Avoid to activate external mods**, which are not adapted to the active supermod.
- g) **Saving while on patrol:** **Do not save while being submerged**. If you want to save, make sure to be at least **50 kilometre away from land** without contact to ships or air planes.
- h) **U-Boat upgrade:** **Do not** upgrade your boat **before your first patrol**, finish your first patrol with a U-Boat in original state and **exit the game afterwards**. If you want to upgrade your boat, do it **before any new patrol**, never during or directly after you completed a patrol.
- i) **Award distribution:** Always distribute medals and promotions **directly after docking in a port** and never after loading a career before a patrol.

If still *unexplainable* SH3 crashes (CTD) occur now, the following (time-consuming) **SH3 loading test** can be tried, to determine the cause of the crash in more detail.

**Hint:** If you do not want to take the time for it, you can directly go to the final solution proposal on the next page (not recommended) – in this case all of your game scores will be lost.

### SH3 loading test:

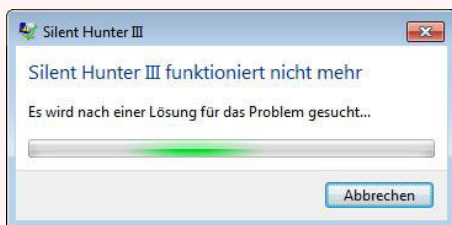
1. Restart your computer to ensure maximum computer power
2. Start SH3 and load the **Naval academy**. **If the game crashes, see the next page!** Otherwise leave the academy (press ESC) and **close SH3**.
3. Start SH3 and directly load the **museum** (very long loading time!). **If the game crashes, see the next page!** Otherwise leave the museum (press ESC) and **close SH3**.  
*Conclusion: Now you know, that the crash (CTD) is not caused by lack of computer power.*
4. Start SH3 and load a **new career** (1939). **If the game crashes, see the next page!** Otherwise leave the career (press ESC) and **close SH3**.
5. Start SH3 and now load **your existing career**. **If the game crashes, see the next page!** Otherwise continue playing, regularly finish the patrol regularly and **close SH3 afterwards**.  
*Conclusion: Now your existing career should be loaded successfully and work (again). Check this now...*
6. Start SH3 and again load **newest savegame of your existing career**. **If the game crashes, see the next page!** **If this worked flawlessly you apparently solved the CTD!** 😊

As already mentioned Silent Hunter III is very prone to crashes (CTD) - especially when saving or loading and in combination with add-ons and mods. In the past ten years countless problems/errors of this type have been reported by the global SH3 community. Regardless of what mods / add-ons are used, the precise cause of these **crashes (CTD)** unfortunately is not completely known until today. If the crash happens when loading a career, usually your whole career is lost, which of course is extremely annoying.

**Warning: The following radical solution is only recommended, if all information and suggestions above did not solve your crash problem (CTD). All mods will be deactivated and all settings, achievements (naval academy), scores and the savegames of your career and single missions will be lost!**

### Problem "Crash while loading":

#### The game crashes while loading (CTD)!



Hint: This message can be cancelled immediately as Windows won't find a solution.

This type of crash usually happens due to non-synchronous savegame files with respect to the original game files.

**This may happen e.g. when several mods are (de)activated in JSGME at the same time or if incompatible *external mods* are activated in addition to the supermod!**

### Solution:


#### Delete your *SH3 savegames* and reenable all LSH3 mods again!

All savegames of LSH3 Edition 2015 are located under MY DOCUMENTS in the subfolder **V15** – now proceed as follows...

1. Find the folder **V15** in your DOCUMENTS folder and delete it
2. Start JSGME and deactivate **all** active mods **on by one** from bottom to top until the list of active mods is empty
3. **Restart your computer afterwards**
4. Start JSGME and only activate the V15 main mod for the time being  
(We strongly recommend not to enable any not verified external mod!)
5. Then start SH3 and first load the naval academy for testing purposes
6. Leave the naval academy right away (press ESC and confirm with YES)
7. **Go back to the SH3 main menu and close SH3 regularly!**

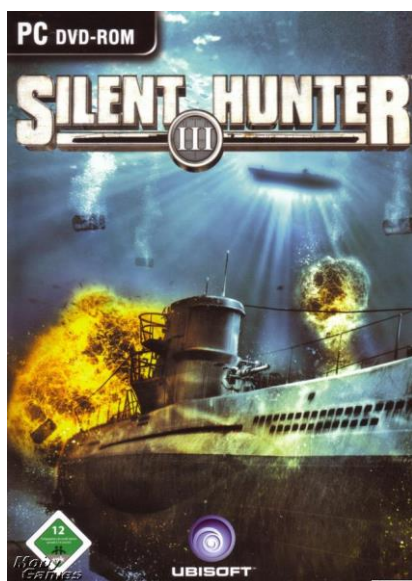
The crash error should no longer occur now.

**If this measure still did not fix the crashes, the only option left is to reinstall original Ubisoft Silent Hunter III by completely deinstalling the game and creating a fresh installation afterwards (see the next pages).**

  
**LIVING SILENT HUNTER III**  
 Edition 2015  
 10th year anniversary of supermodding  
  
 2005-2015 by LSH3.com

## Ubisoft® Original Game Silent Hunter III©

# DVD Installation under Windows Vista/7/8/8.1/10



Original SH3-DVD Cover 2005

Ubisoft® published Silent Hunter III© in Germany on 17 March 2005. SH3 had been developed for Windows XP and four corrective patches followed thereafter. Today, the game in its final patch version is regarded the best submarine *simulation* of all time.

The game on DVD with its different patch versions (with or without StarForce copy protection) was sold hundred-thousandfold worldwide.

Today's *final* SH3-DVD includes patch version 1.4b without StarForce copy protection.

**Tip:** On Amazon a brand-new SH3-DVD (patch version 1.4b without StarForce) today costs just under 5 € / 5 \$. In order to facilitate easy installation, I would advise every owner of an *old* SH3-DVD (patch version with StarForce) to buy the game new (see page 13)!

In principle, each SH3-DVD version can be installed under Windows Vista/7/8/8.1/10. However, three steps have to be observed: **1)** Prior to installation, the DVD must be checked for patch version and **2)** for StarForce and **3)** the storage location must be adjusted during installation.

The following pages explain step-by-step how to proceed in detail.

Urmel, March 2015



Original SH3-DVD 2005  
Without StarForce copy protection

## Check SH3 Patch Version on DVD

**Note:** If **patch version 1.4b** exists, you may skip this page. Check whether **StarForce copy protection** exists (see next page).

Should the SH3 patch version be unknown, it is advisable **before installation** to check the SH3-DVD at hand for its patch version.

Start by inserting the SH3-DVD:

1. Open the file explorer and select BD/DVD drive under COMPUTER...
2. Select "setup.exe" and click right mouse button...
3. Select "properties" in the dialogue box...
4. The new window shows the "properties of setup.exe"... now change to the "details" tab above...
5. The exact patch version is now shown under "product version"!

If product version **1.4.0000** is shown, the latest patch version 1.4b exists. There is no need to patch this version!

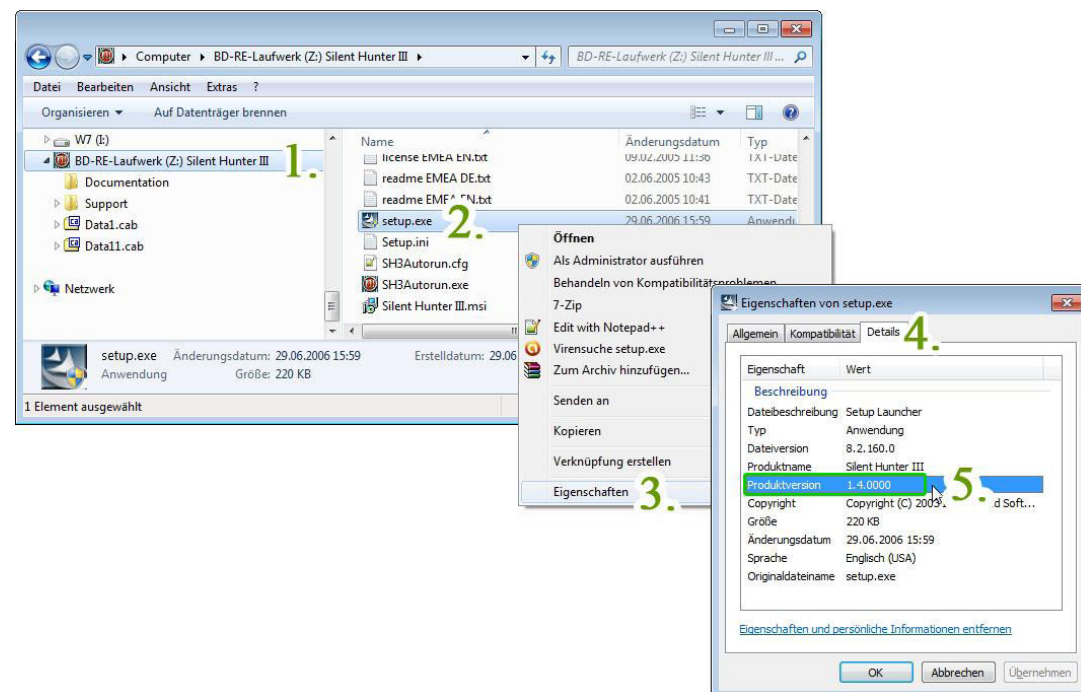
If product version **1.0.0000** is shown, this is the initial SH3 version (unpatched). It is absolutely necessary to update SH3 on patch version 1.4b after installation!

The latest **SH3 patch version 1.4b** can be downloaded from Ubisoft under:  
» <http://www.silenthunteriii.com/uk/updates.php>

Here, select patch version "EMEA DVD PATCH 1.4b" for the **German SH3-DVD** or patch version "US DVD PATCH 1.4b" for **US SH3-DVD**.

**Important:** The game **must not be started before and after patching!**

First clarify, if your SH3-DVD has **StarForce copy protection** (see next page).



Example: Product version **1.4.0000** = this is the latest **patch version 1.4b**

## Identify StarForce Copy Protection on SH3-DVD

**Note:** If patch version 1.4b without StarForce copy protection exists, this page can be skipped and you may install the game according to instructions (see next pages).

A 25-digit serial number printed on the SH3-DVD identifies the game as StarForce copy-protected (Install Key Code)!

**Important:** StarForce copy-protected SH3 installations only work under Windows XP/Vista (32Bit).  
The game cannot be started when installed under 7/8/8.1/10 (64Bit) – an *error message* is displayed!  
Only after applying the SH3 **No-DVD Fix**, the game can also be started under Windows 7/8/8.1/10 (64Bit).

If you have a DVD coming with StarForce copy protection, the **No-DVD Fix** must be applied additionally after installation.  
Applying the **No-DVD Fix** always requires a **new installation of SH3 with patch version 1.4b** (see previous pages).

The SH3 **No-DVD Fix** is tolerated by Ubisoft and can be downloaded from **GameCopyWorld** under:

» [http://www.gamecopyworld.com/games/pc\\_silent\\_hunter\\_3.shtml](http://www.gamecopyworld.com/games/pc_silent_hunter_3.shtml)  
Name: **Silent Hunter 3 v1.4b [ENGLISH] No-DVD/Fixed EXE** – Download filename: **rld-sh14.rar**

**Note:** In order to be able to utilize the **rld-sh14.rar** archive file, we recommend the free archiving tool 7Z » [www.7-zip.org](http://www.7-zip.org)

### Technical note:

The installation of a StarForce copy-protected SH3-DVD has no impact whatsoever on Windows 64Bit operating system files.  
Manual or automated clean-up attempts (through *StarForce Removal Tool* or other *Registry* clean-up programs) are therefore futile.

Other, older information on the **No-DVD Fix** are available in the Ubisoft SH3-forums:

German: » <http://forums-de.ubi.com/showthread.php/29634-SHIII-endlich-legal-ohne-DVD-im-Laufwerk-spielbar>  
» <http://forums-de.ubi.com/showthread.php/32462-SH-III-ohne-DVD-im-Laufwerk-so-geht-es-!?highlight=Spiele+ohne>  
English: » <http://forums.ubi.com/showthread.php/442645-How-to-play-Silent-Hunter-III-without-the-DVD-in-the-DVD-Drive-Forums>

## Buy SH3 DVD new

Should you understandably regard the above procedures too complicated, I would recommend buying a brand-new original SH3-DVD without StarForce! A new SH3-DVD (Patch version 1.4b without StarForce) is today available on Amazon for 5 € / 5 \$ (Status March 2015).

The following SH3-DVD version of **PURPLE HILLS** (or **GREEN PEPPER**) guarantees a **SH3-DVD with patch 1.4b and without StarForce**:

» <http://www.amazon.de/Purple-Hills-Silent-Hunter-3/dp/B002YNS4FY>

(Amazon product code version PURPLE HILLS: ASIN: **B002YNS4FY**)



Original SH3-DVD  
with StarForce copy protection



Original SH3-DVD  
Version PURPLE HILLS  
Patch version 1.4b without StarForce

## Installing SH3-DVD (1/2)

**Starting situation:** The “Destination Location/Save Folder” must be changed upon installation to allow for proper functioning with SuperMods also. If this is not done, or if a SH3-DVD has already been automatically installed, the game with SuperMod won't start or will crash to desktop (CTD). Such an installation must first be uninstalled and then installed anew. Should you have an “old” SH3-DVD, make sure you additionally have **Patch 1.4b** and **No-DVD Fix** for installation (see previous pages).

Insert the SH3-DVD, select language and then “Install”.

Follow the instructions until the window prompt “Choose Destination Location “...

**Important:** In the following steps you only need to select **a drive**.  
SH3 installation process will then **automatically** create a new “Destination Folder”!

**Screenshot 1 - “Choose Destination Location”:**

» Click “Browse...”

**Screenshot 2 – “Select Folder”:**

» Browse and select (below “Computer”) drive (C:)

» Then click “OK”

**Screenshot 3 - “Choose Destination Location”:**

Below the *Destination Folder* you now see drive C:\

» Click “Next” to continue the installation.

**Important:** A new folder has now **automatically** been created for SH3 installation.  
The *destination folder (destination location)* is now: **C:\SilentHunterIII\**

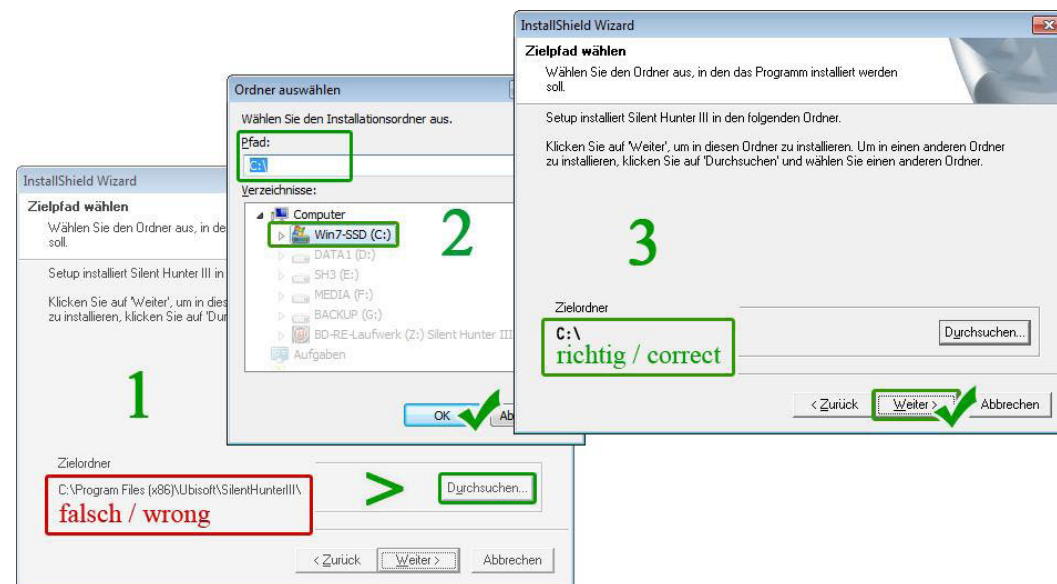
» Confirm the following windows by clicking “Next”.

» The installation process can take up to 10 minutes.

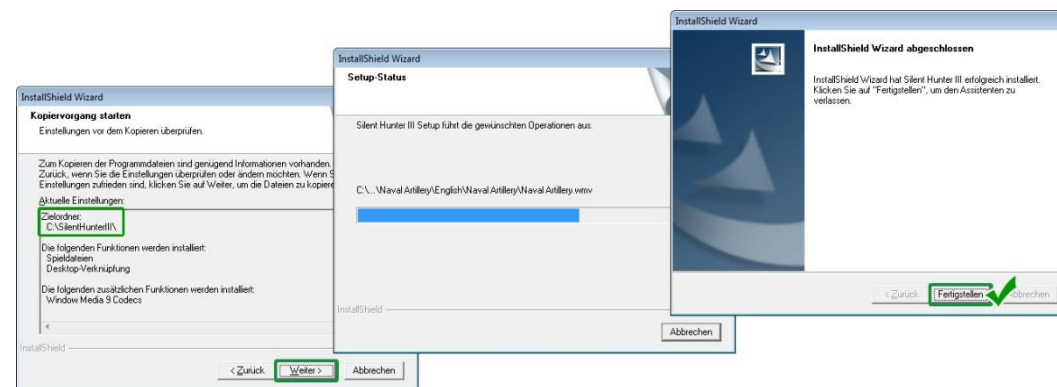
» The installation is completed by clicking “Finish”.

**Important:** Depending on your SH3-DVD version further windows will be displayed.  
Note the following page in order to find out what to do!

**Tip:** For the use of SH3 with SuperMods the game should **not** be started yet!



Change of Destination Location / Destination Folder during installation



Roundup of installation changes, copy procedure and finish of installation

## Installing SH3-DVD (2/2)

After SH3-installation, additional windows are displayed:

### - Window “Product Registration SH3”

Register at Ubisoft U-Play or simply select “Do not register”.

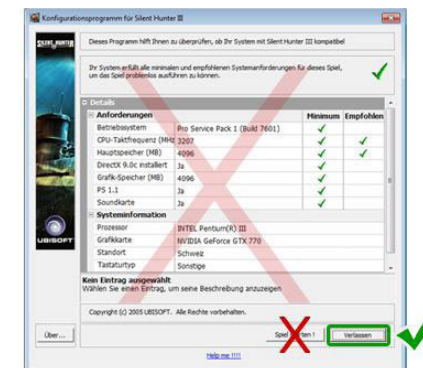
### - Window “Configuration Program SH3”

This program shows faulty values and can be ignored.

**Important:** For the use of SH3 with SuperMods the game should **not** be started yet!  
Finish the program by clicking “Cancel”.



Ubisoft product registration window



SH3 configuration program (ignore)

### - Window “GameShadow”

After copying, the additional program **GameShadow** may be displayed.

Today, GameShadow does no longer work for SH3 and should therefore **not** be installed.

In the (second) window “GameShadow – InstallShield Wizard” proceed as follows:

- » Click “Cancel” to abort the installation
- » Confirm the following prompt by clicking “Yes”
- » Thereafter click “Finish”

Result: GameShadow has **not** been installed.

Finally, SH3 has now been correctly installed.



Additional program **GameShadow** must **not** be installed!

**Important:** If necessary, you here need to install **Patch 1.4b** (see previous pages). Start patch file “silent\_hunter\_3\_dvd\_1.4b\_us.exe” and then select the **SH3 installation folder**.

If SH3 with **StarForce** has been installed, you now need to finally apply the **No-DVD Fix** (see previous pages).

Afterwards, the SH3-installation under Windows Vista/7/8/8.1/10 is now ready to play without inserted DVD.


**If you want to play SH3 with a SuperMod, I recommend not to start the game and first to install the SuperMod.**

**See next page for recommendations on Silent Hunter III SuperMods and Tools.**

## SuperMod Recommendations for Silent Hunter III

The following additional programs for SH3 represent prerequisites to be able to play SH3 with the latest SuperMod.

**Note: The listed additional programs are already included in LSH3 Edition 2015!**

 **JSGME** ("JoneSoft Generic Mod Enabler" by Jaesen Jones) allows for using Super-/Mod files and is a mandatory requirement!


JSGME is available for free and can be downloaded under e.g.: [www.lsh3.com/dl/JSGME.ZIP](http://www.lsh3.com/dl/JSGME.ZIP)

 **4GB Patch** (by NTcore) allocates more system memory to the game and is also a mandatory requirement for the latest SH3-SuperMod!

4GB Patch is available for free and can be downloaded from NTcore under: [http://ntcore.com/4gb\\_patch.php](http://ntcore.com/4gb_patch.php)

 **HSIE Patch** (by h.sie) eliminates SH3 program errors and enables important basic settings.

HSIE Patch is available for free and can be downloaded under: <http://www.mediafire.com/download/27tcm2yg29gsqgc/V16B1-Patch-Kit.7z>

 **SH3-Commander** (by Jaesen Jones) enables far-reaching configuration options during a SH3-Career.

SH3-Commander is available for free and can be downloaded under: [www.lsh3.com/dl/SH3-COMMANDER\\_3.2.ZIP](http://www.lsh3.com/dl/SH3-COMMANDER_3.2.ZIP)

Worldwide, countless SH3-enthusiasts work on improving the game. Today, hundreds of single mods for SH3 exist. The best works are included for free in the following SuperMods:

### LSH3 - Living Silent Hunter III - Edition 2015

by **Urmel, Blueduck, Eremit & Team**

Full version: v15

Release: 2015 May

Includes: 4GB Patch, HSIE Patch, JSGME, SH3-Commander

Requires Windows: 7 and newer, 8GB RAM, 2GB VRAM

Original Download & Support: [www.lsh3.com](http://www.lsh3.com)

### CCoM - Captain's Choice of Mods

by **Rowi58**

Latest full version: v10.xx / Update: v11.xx

Release: 2014 / Update: 2015

Includes: JSGME, SH3-Commander

Requires Windows: 7 and newer, 8GB RAM

Blog: <http://rowi58-ccom-captainschoiceofmods.blogspot.ch/>

Original Download: <http://www.mediafire.com/rowi58>

### NYGM - Not your Grandmothers Mod

Tonnage War Mod of **Stiebler & Team**

Latest full version: v2.5 / Update: v3.6

Release: 2011 / Update: 2015

Includes: no further tools

Requires Windows: XP and newer

Original Download: not available

Information & Download: <http://www.subsim.com/mods1/nygm/>

Older SH3-SuperMods (2005 until 2010):

### LSH3 - Living Silent Hunter III - Edition 2010

by **Blueduck, Urmel & Team**

Final full version: v5.1

Release: 2009

Includes: 4GB Patch, JSGME, SH3-Commander, MultiSH3...

Requires Windows: XP and newer

Original Download & Support: [www.lsh3.com](http://www.lsh3.com)

### GWX - The Grey Wolves Experience

by **Kptn. Lehmann & Team**

Final full version: v3 Gold

Release: 2009

Includes: JSGME

Requires Windows: XP and newer

Original Download: <http://www.thegreywolves.com/>

### WAC - War Ace Campaign

by **HanSolo**

Final full version: v4.1

Release: 2008

Includes: no further tools

Requires Windows: XP and newer

Original/Direct Download: not available

(can be found via Forums marinesims.de or subsim.com

Gamer „Plissken04“ has the WAC-files on his FTP-Server)

Even after 10 years, the SH3 Gamer Community is still very vital and active. Contact and support around SH3 is available, among others, in the following forums:

SH3-Foren in **German** language: **MarineSims**: <http://www.marinesims.de>

**Ubisoft**: <http://forums-de.ubi.com>

SH3-Foren in **English** language: **SubSim**: [www.subsim.com](http://www.subsim.com)

**Ubisoft**: <http://forums.ubi.com>

Should you have problems finding information you're looking for, contact me directly: [urmel@lsh3.com](mailto:urmel@lsh3.com) or via [www.lsh3.com](http://www.lsh3.com)